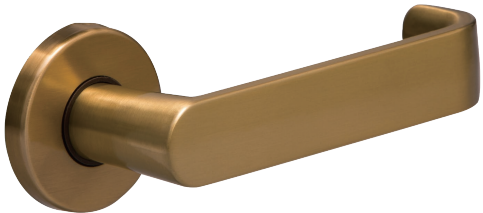
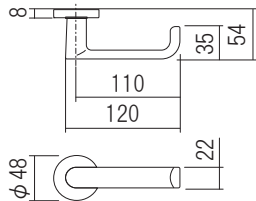


Draco Type 03



This lever has an adequate thickness to make you feel comfortable when gripping it. The design is also perfect to be used in a room with any ambiance.

Material: Aluminum  
Standard Finish: SW·SA·SG·SB·CR·PG·AS·AA·AG  
Customizable Finish: PC·CG·BC·SPC·SCG·SBC  
Door Thickness: 28~40mm



1M-SG



3M-CR



2C-CR



2E-SW



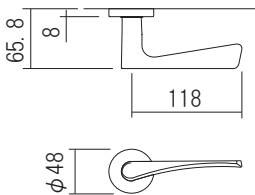
3C-SW

Grus Type 05



This popular lever has been adapted in a five-stars hotel. Provided with a beautiful lining design, this is an ideal lever in terms of aesthetic and functionality.

Material: Aluminum  
Standard Finish: SW·SA·SG·SB·CR·PG  
Customizable Finish: PC·CG·BC·SPC·SCG·SBC  
Door Thickness: 28~40mm



1M-SA



3M-CR



1C-SW



3C-SG



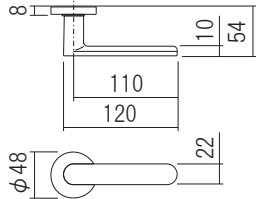
2C-SA

Fornax Type 04



This simple and timeless design lever with an ideal grip thickness and a round-shaped edge creates comfort and safety.

Material: Aluminum  
Standard Finish: SW·SA·SG·SB·CR·PG·AS·AA·AG  
Customizable Finish: PC·CG·BC·SPC·SCG·SBC  
Door Thickness: 28~40mm



1M-AS



3C-AS



2C-CR



2C-SG



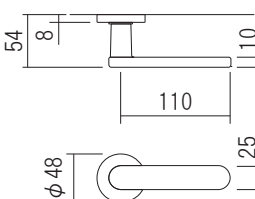
2F-CR

Hydra Type 06



This lever has a vast surface with a rounded shape on both edges, creating a gentle-looking and luxurious lever handle at the same time.

Material: Aluminum  
Standard Finish: SW·SA·SG·SB·CR·PG  
Customizable Finish: PC·CG·BC·SPC·SCG·SBC  
Door Thickness: 28~40mm



1M-CR



3M-PG



3C-PG



1C-SW



2C-PG